



The image shows a close-up of a ProTrack Rail Aligner assembly. It consists of several parallel metal tracks mounted on a wooden base. Each track has a series of small, rectangular metal components (likely sensors or actuators) spaced along its length. Some of these components are labeled with "WCR" and "GRD-TJS16001". The tracks are held together by a series of metal rods or rails. The overall structure is designed for precise alignment and tracking.

**MODELTECH**

# ProTrack Rail Aligner User Manual

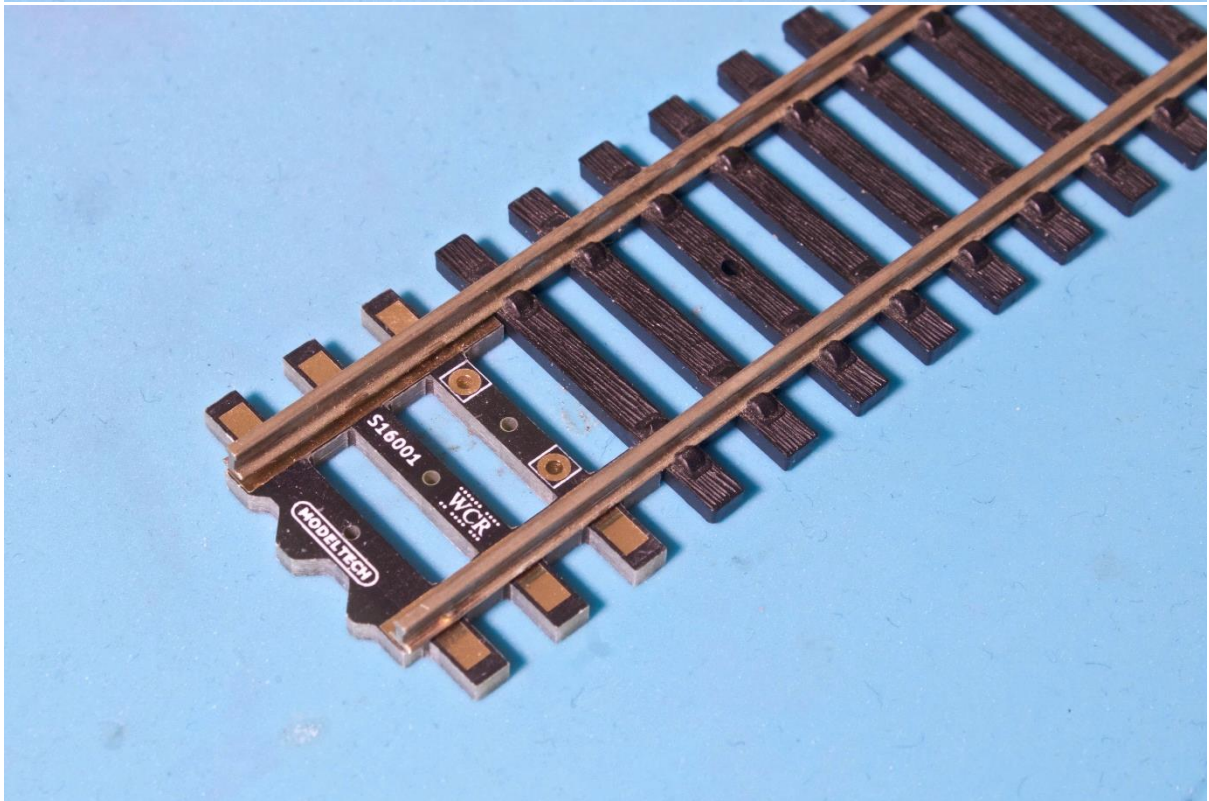
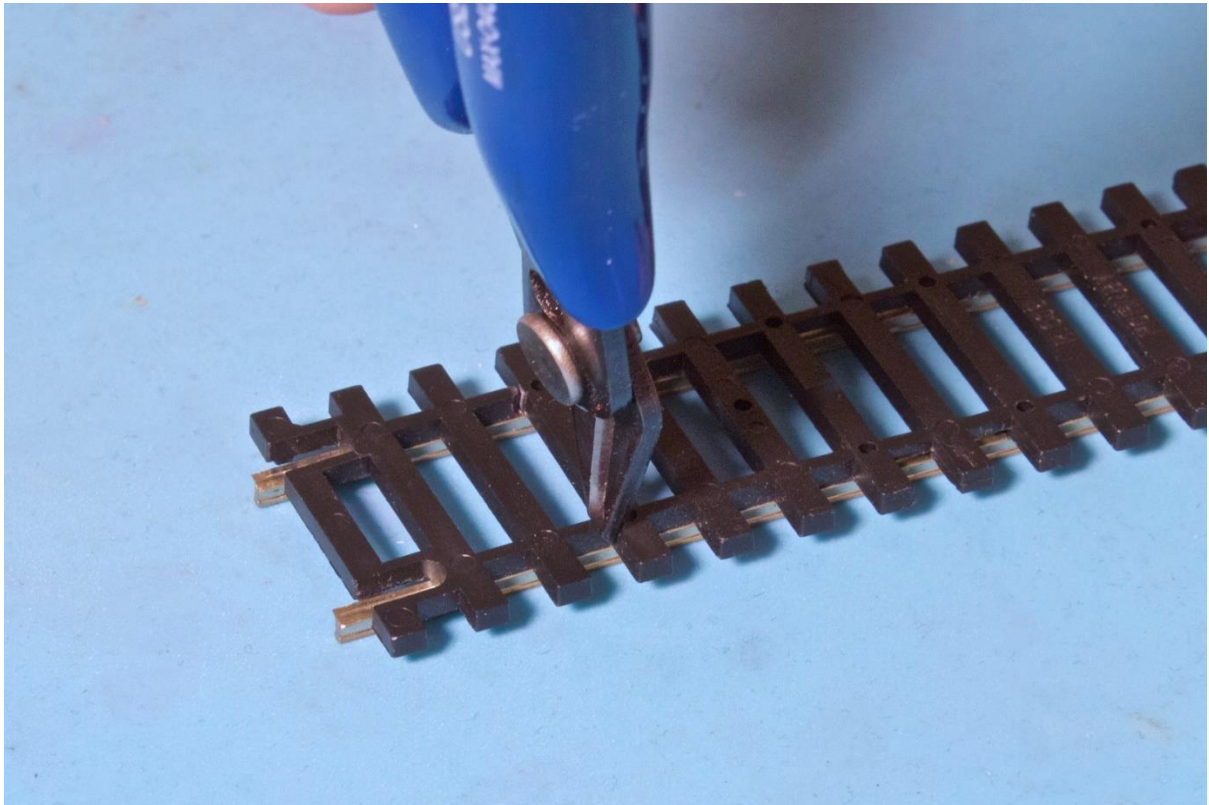




**Recommended Tools: Flush cutters, Soldering Iron, Solder Paste.**

### Step 1: Remove plastic sleepers.

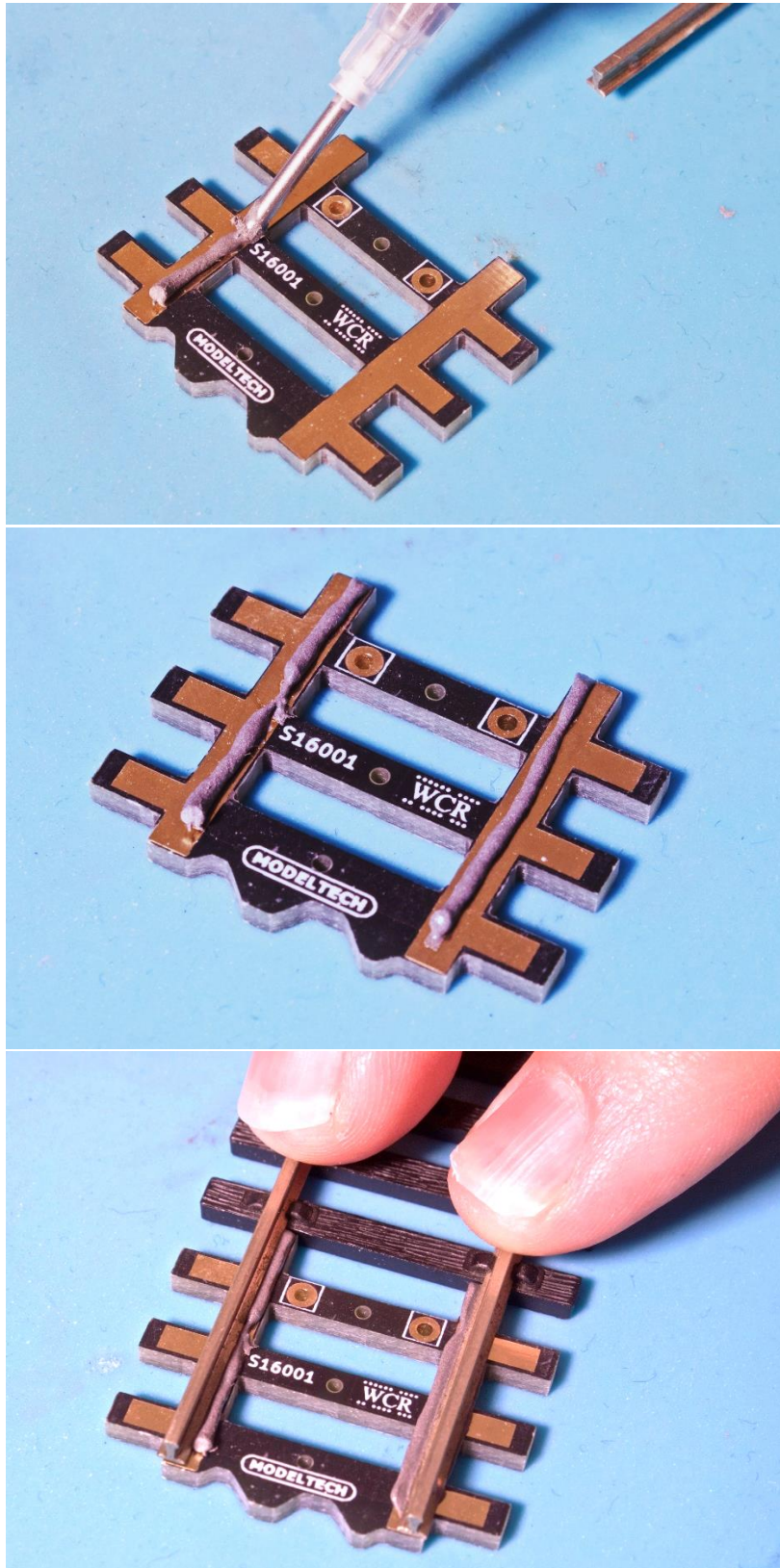
Using a pair of flush cutters remove the plastic sleepers up to the length of the rail aligner. You should be able to place the rail aligners so that the end is flush with the rail end.





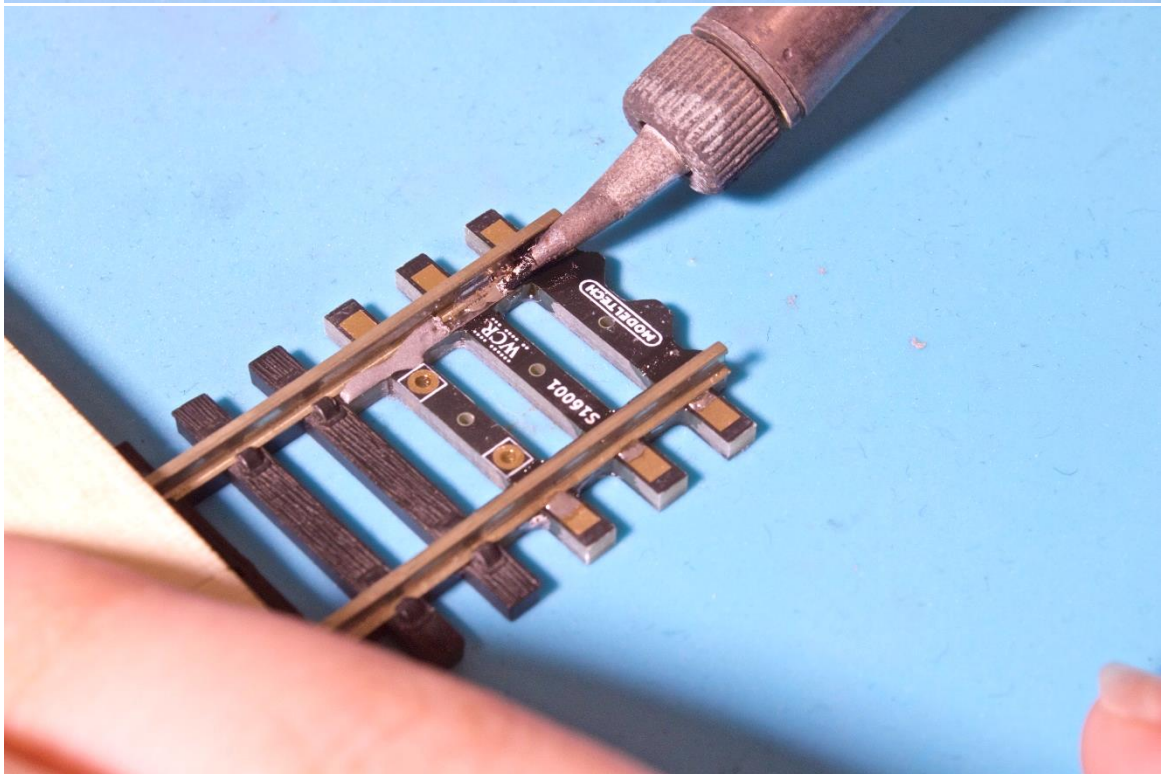
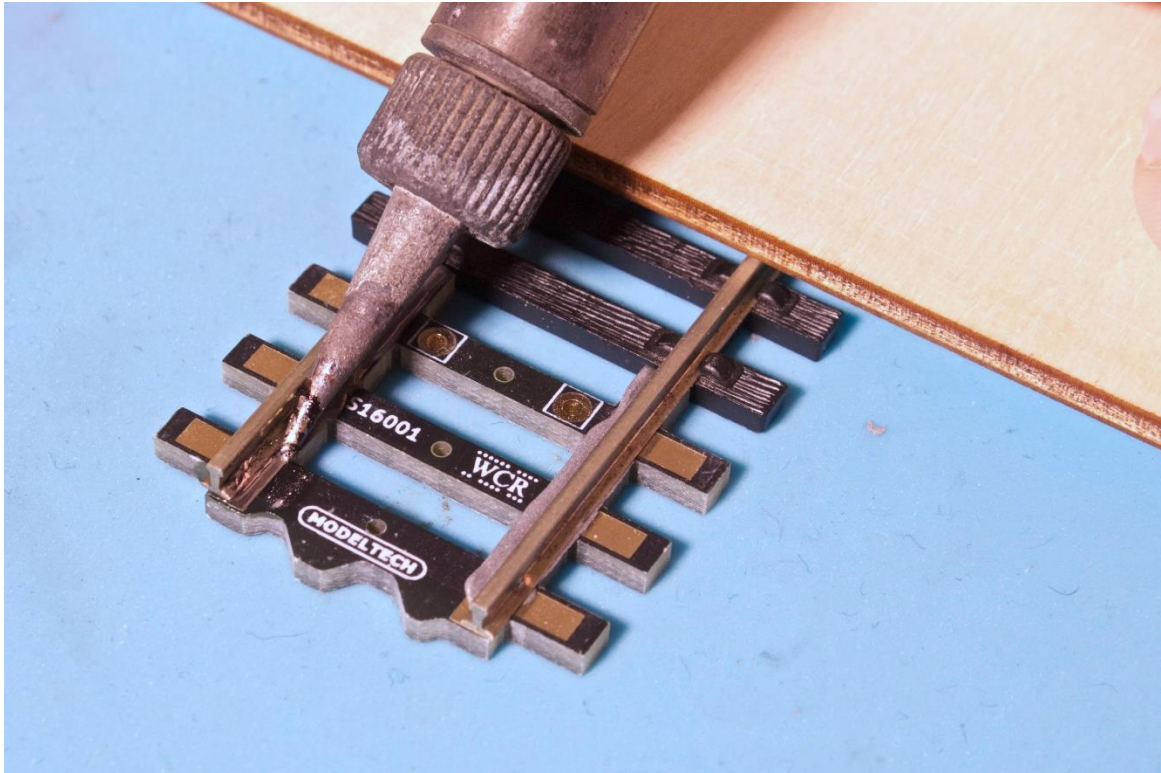
## Step 2: Apply Solder Paste.

Apply solder paste as illustrated below either using a syringe like applicator or the end of a toothpick.



### Step 3: Apply heat.

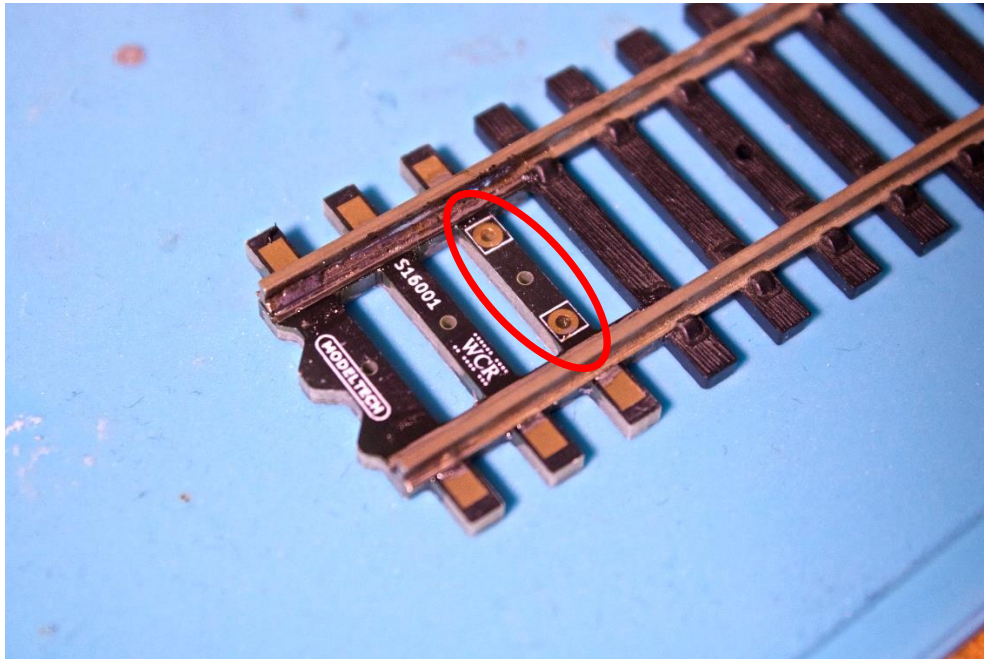
With your soldering iron, place the tip against the inside rail and apply a light downward pressure. Placing a piece of wood over the rails will help apply pressure to the rail to make a good join. (Avoid applying the heat for too long as this may result in the plastic sleepers melting.)





#### Step 4: Ready for install.

If you wish to add droppers for power you can do so by soldering wires through the two plated holes. You can then install the modified track onto your layout like a normal track piece.



#### Lift-out Sections:

If using the rail aligners for a lift out section, you will need to offset the rail aligner as illustrated below. Please ensure the removable section is supported so that there is no force exerted on underside of the rail aligner to avoid damage.

